

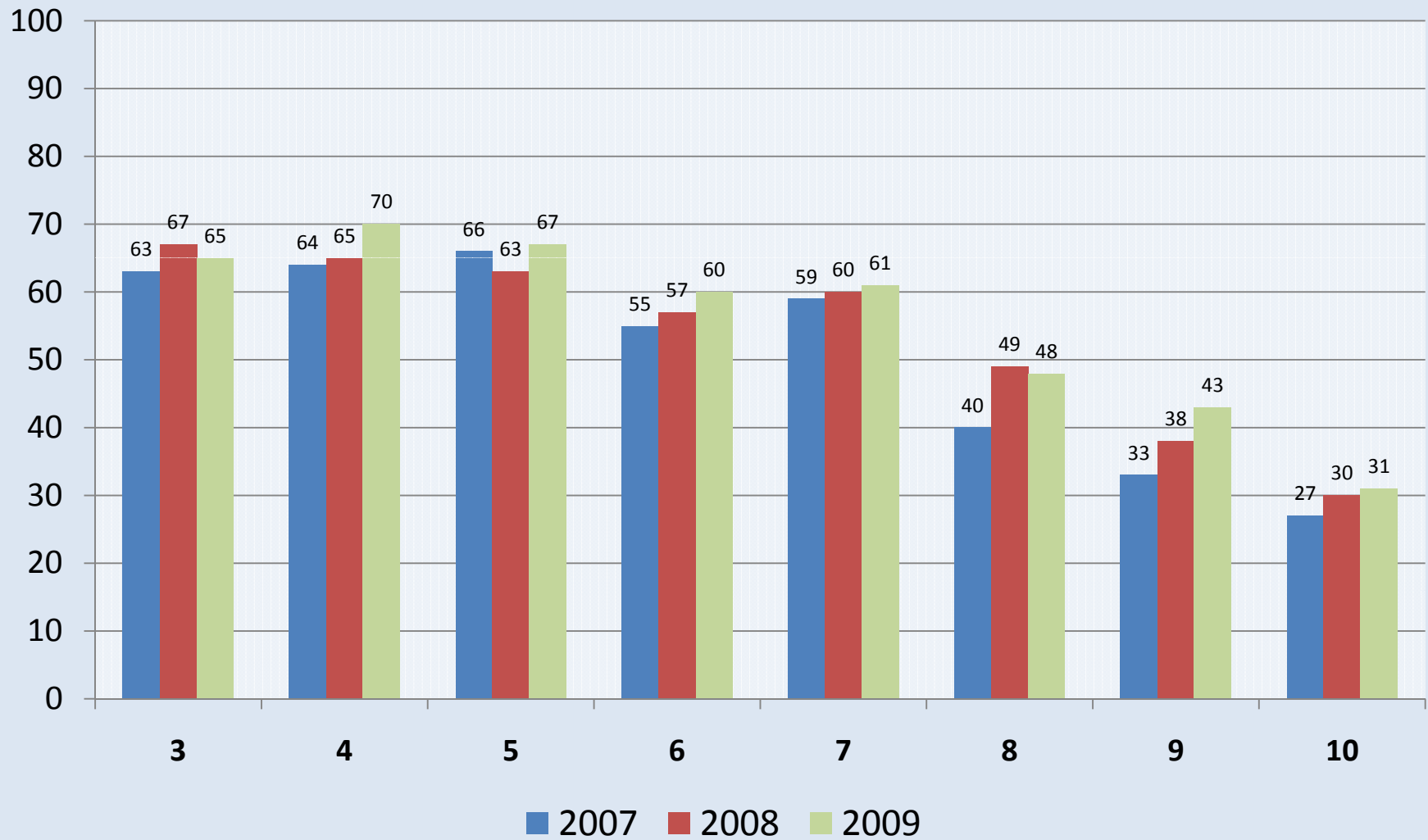


Accountability Results

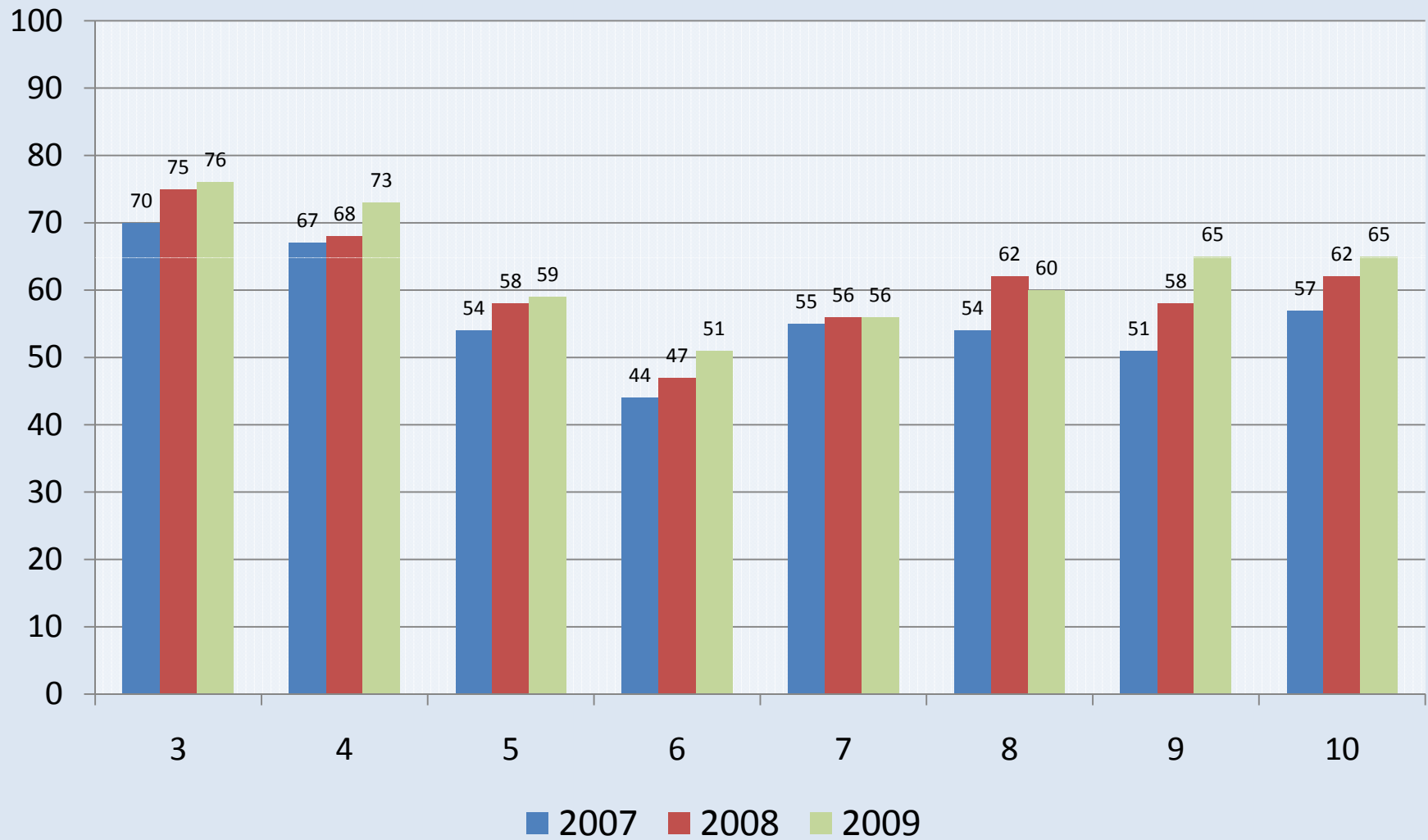
Miami-Dade County Public Schools

A-1

FCAT Reading: M-DCPS Percent Scoring 3 - 5



FCAT Mathematics: M-DCPS Percent Scoring 3 - 5



Differentiated Accountability Schools: Reading

READING		Level 3-5			
		2007	2008	2009	Diff. 08-09
GRADES 3-5					
	<i>DISTRICT</i>	64	65	67	+2
2501	Holmes Elementary	32	31	41	+10
2981	Liberty City Elementary	42	31	61	+30
GRADES 9-10					
	<i>DISTRICT</i>	30	34	37	+3
7151	Homestead Senior High School	13	15	19	+4
7231	Miami Carol City Senior High School	12	14	15	+1
7251	Miami Central Senior High School	9	10	14	+4
7301	Miami Edison Senior High School	8	10	9	-1
7381	Miami Norland Senior High School	12	13	17	+4
7591	North Miami Senior High School	16	15	20	+5
8201	Corporate Academy South	10	16	17	+1

Differentiated Accountability Schools: Mathematics

MATHEMATICS		Level 3-5			
		2007	2008	2009	Diff. 08-09
GRADES 3-5					
	DISTRICT	64	67	70	+3
2501	Holmes Elementary	54	49	64	+15
2981	Liberty City Elementary	43	25	63	+38
GRADES 9-10					
	DISTRICT	54	60	65	+5
7151	Homestead Senior High School	28	36	46	+10
7231	Miami Carol City Senior High School	35	38	48	+10
7251	Miami Central Senior High School	26	30	46	+16
7301	Miami Edison Senior High School	27	37	32	-5
7381	Miami Norland Senior High School	34	36	45	+9
7591	North Miami Senior High School	36	35	50	+15
8201	Corporate Academy South	24	43	27	-16

School Performance Grade Distribution for Elementary/K-8 Center, Middle, and Senior High Schools 2005-06, 2006-07, 2007-08*, 2008-09

	A				B				C				D				F			
Level	05-06	06-07	07-08	08-09	05-06	06-07	07-08	08-09	05-06	06-07	07-08	08-09	05-06	06-07	07-08	08-09	05-06	06-07	07-08	08-09
Elementary/ K-8 Centers	132	117	123	158	40	24	37	31	39	60	48	31	6	12	14	10	2	9	5	3
Middle	39	19	33	36	10	15	10	12	17	16	24	19	1	12	6	7	0	6	1	1
Senior	8	6	15	16	11	5	9	12	13	14	12	13	8	10	7	9	3	12	7	6
Total	179	142	171	210	61	44	56	55	69	90	84	63	15	34	27	26	5	27	13	10
Percent	54%	42%	49%	58%	18%	13%	16%	15%	21%	26%	24%	17%	5%	10%	8%	7%	2%	8%	4%	3%

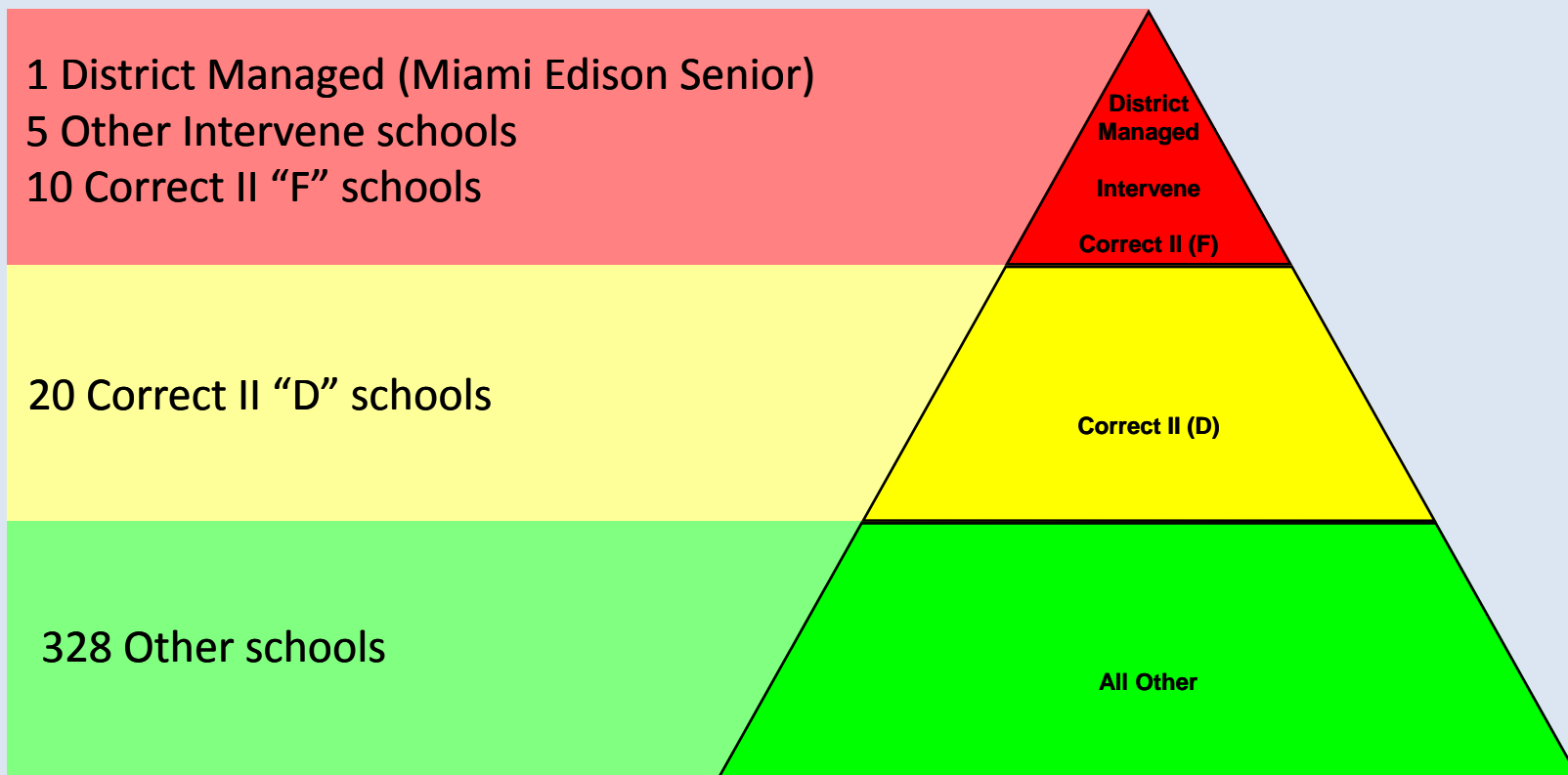
* Includes one alternative education center that had sufficient membership to receive a school performance grade in 2007-08.

School Accountability Grades, 2005-06 through 2008-09 Selected Differentiated Accountability Intervene and Correct II Schools

School		2005-06	2006-07	2007-08	2008-09
2501	Holmes Elementary	C	D	F	C
2981	Liberty City Elementary	C	C	F	A
7151	Homestead Senior High School	D	F	F	D
7231	Miami Carol City Senior High School	D	F	F	D
7251	Miami Central Senior High School	F	F	F	D
7301	Miami Edison Senior High School	F	D	F	F
7381	Miami Norland Senior High School	D	F	F	D
7591	North Miami Senior High School	D	F	F	D
8201	Corporate Academy South	N/A	N/A	F	N/A

Education

Prioritized Support Based on Differentiated Accountability Designation



Education

Tiered Support: All Schools

- Instructional Coaching Services
- Core Intervention Programs
- Technology delivered supplementary interventions (Reading Plus, Successmaker, Gizmos)
- Interim Assessments available
- Saturday Academy lesson plans and demonstration of lessons accessible through technology

Education

Tiered Academic Support: D and F Schools

- Instructional reviews
 - Completed for all schools 3 times annually
 - Conducted by district content area teams
 - Drives deployment and on-going support
- District/Region content teams deployed (R/M/S)
 - Begin in September deployment of existing district and region staff
 - On-going professional development for deployed teams
 - Increased frequency and intensity of class level support December-March
 - Student Teacher Support Team (ST2) Model deployed to all Elementary Schools
- Expanded cadre of on-site instructional coaches
- Saturday Academies (20) with on-site district support