



### Installing G2D Scanning Software 5.0.8

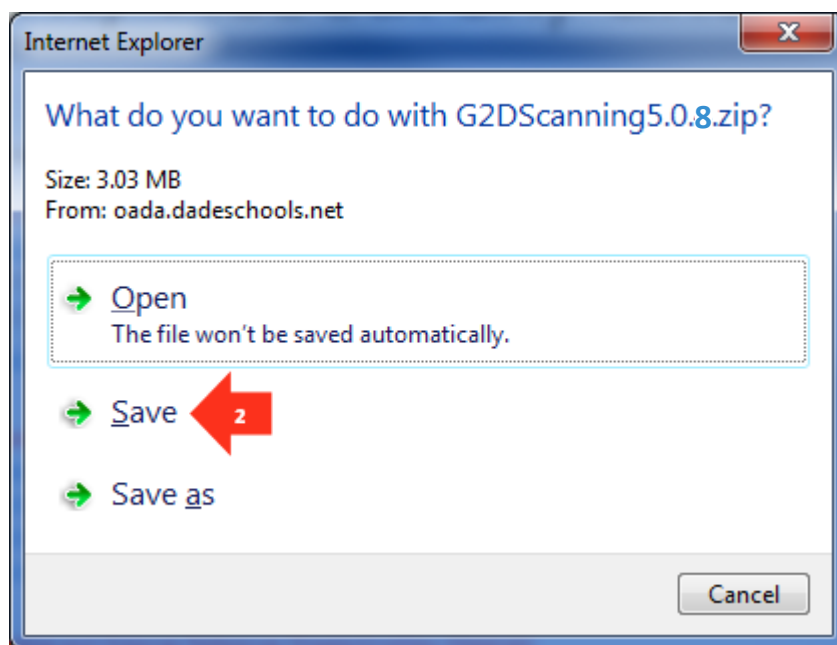
Note: Before installing the new G2D Scanning Software 5.0.8, you must remove any previous versions of either Elements PPS or G2D Scanning Software before installing this new version. To remove the old software go to the **Start Menu**, select **Control Panel**, under the Programs section select, **Uninstall a Program**. Locate the **Elements PPS** or **G2D** from the list, then click **Uninstall**. Once the uninstall finishes, proceed with the instructions below.

#### Installation of G2D® Scanning Software 5.0.8

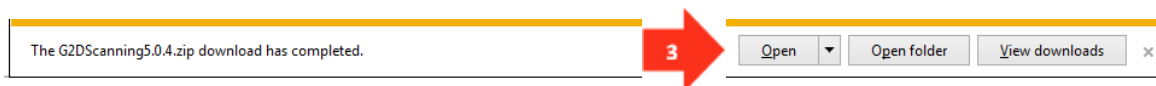
1. Click this download link. <http://oada.dadeschools.net/IAP/IAP.asp>



On the website, click on the **G2D Scanning Software 5.0.8 (Download Software)** link.



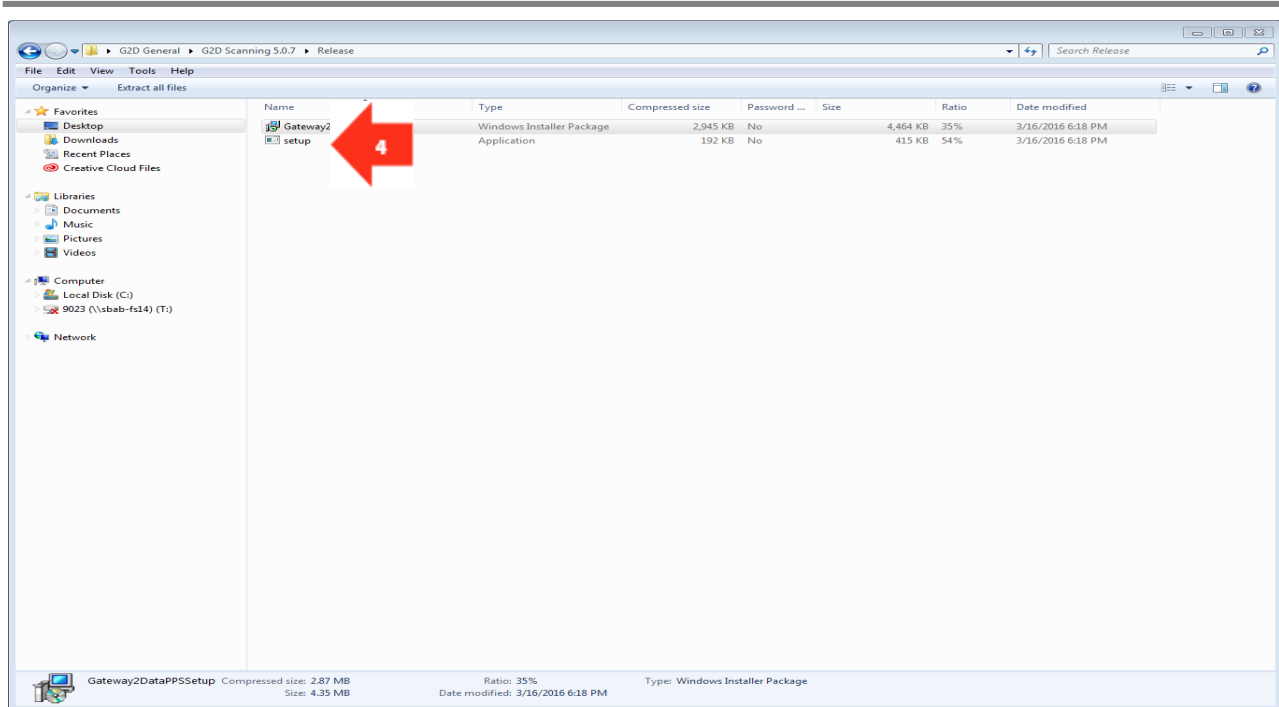
2. Click the **Save** option.



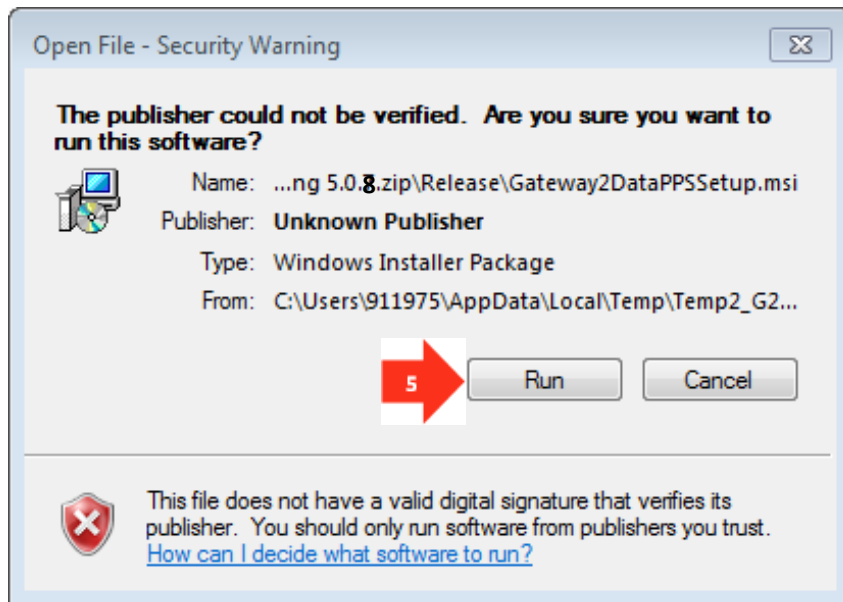
3. Click the **open** button.



### Installing G2D Scanning Software 5.0.8



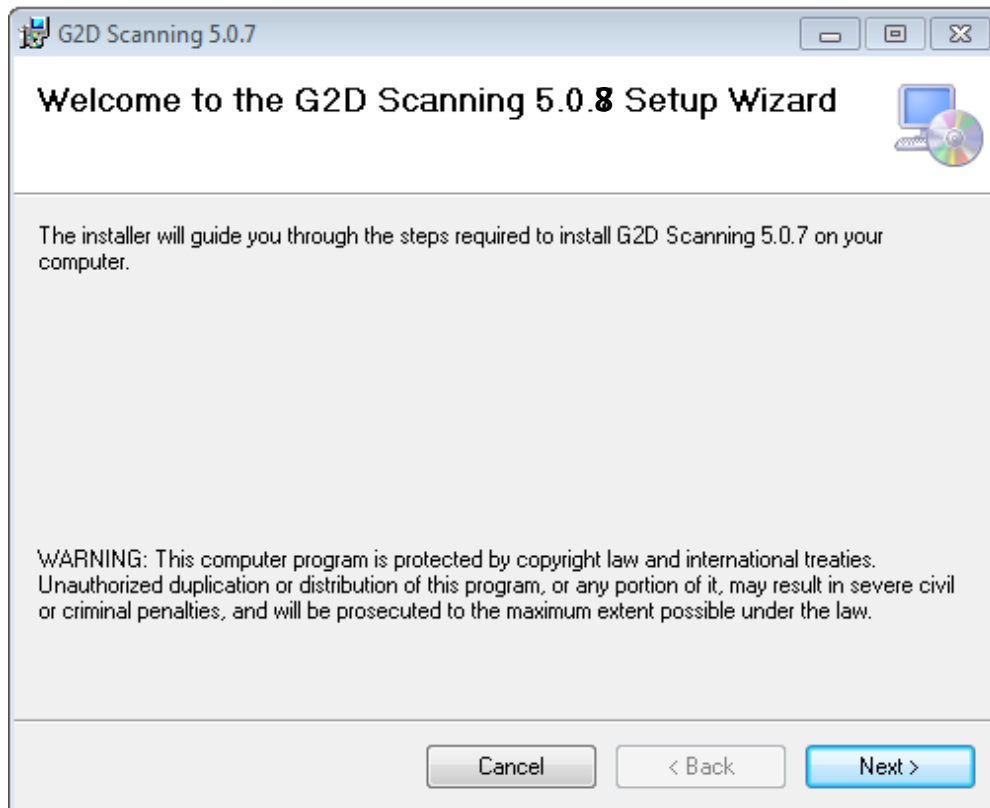
4. Double click **setup** to start G2D® Scanning Software 5.0.8 Setup Wizard.



5. Click **Run**.



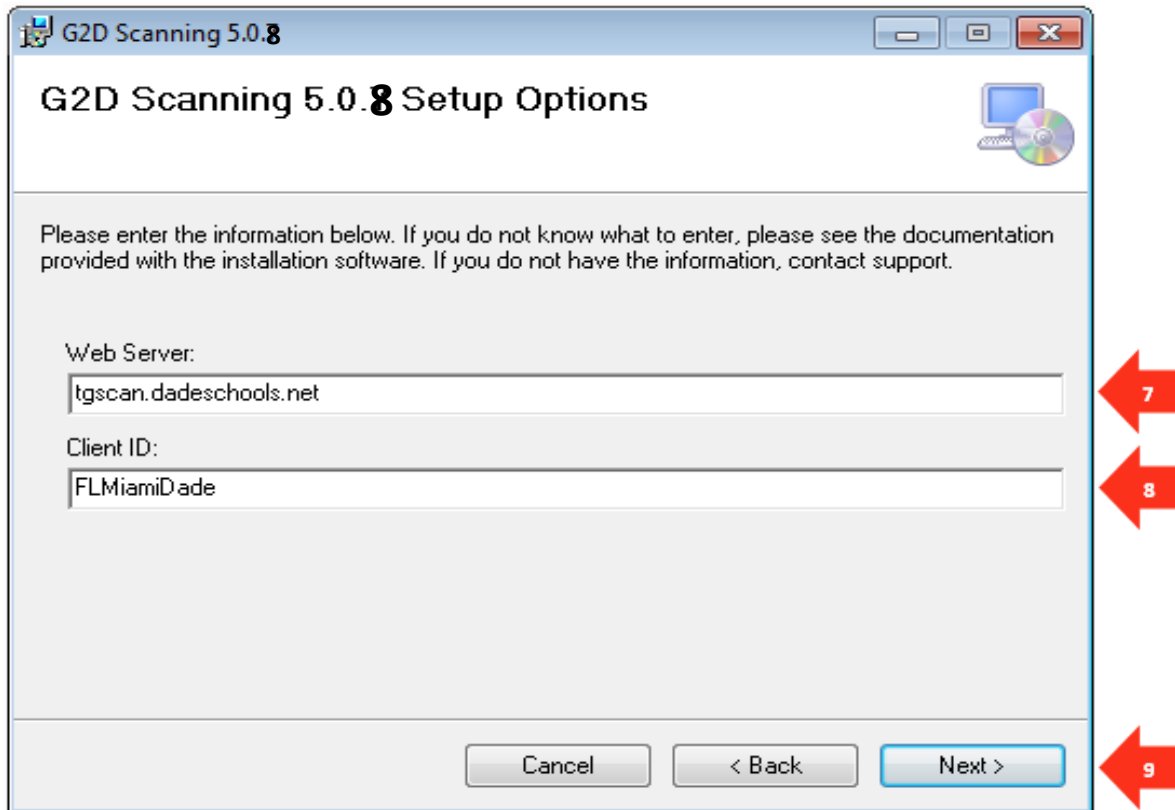
### Installing G2D Scanning Software 5.0.8



6. Click the **Next** button.



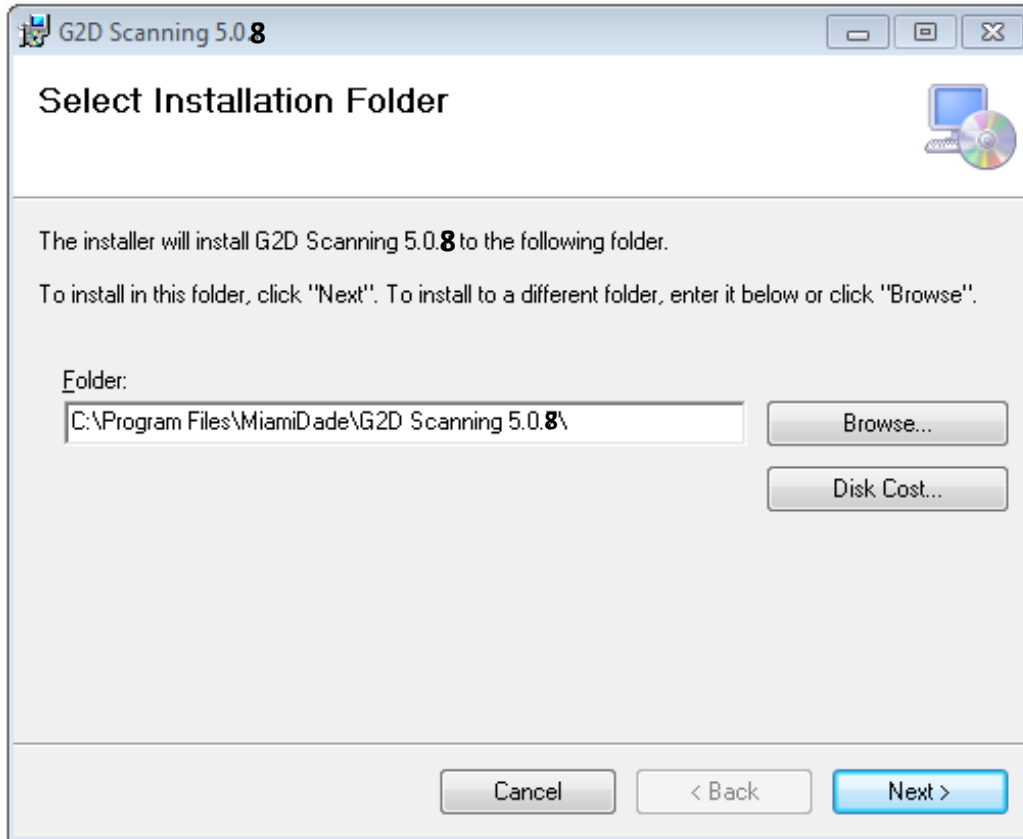
### Installing G2D Scanning Software 5.0.8



7. Confirm your **Web Server** on display is **tgscan.dadeschools.net**
8. Confirm your **Client ID** on display is **FLMiamiDade**
9. Click the **Next** button.



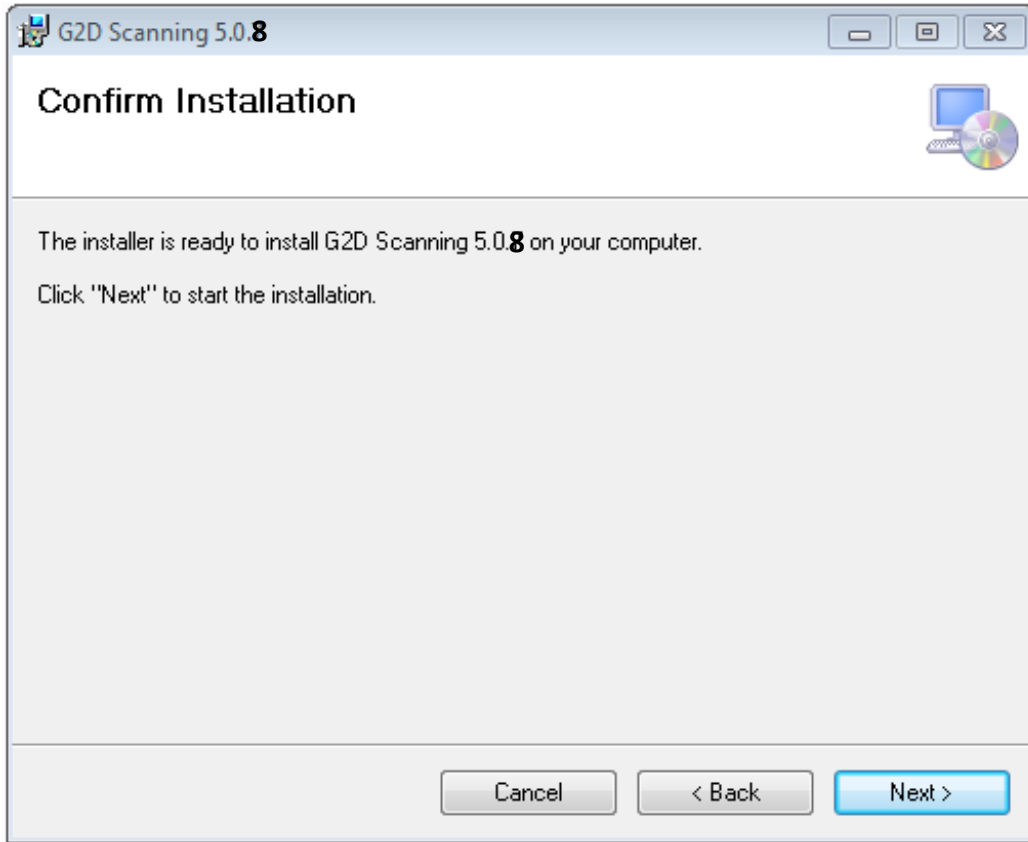
**Installing G2D Scanning Software 5.0.8**



10. Click the **Next** button.



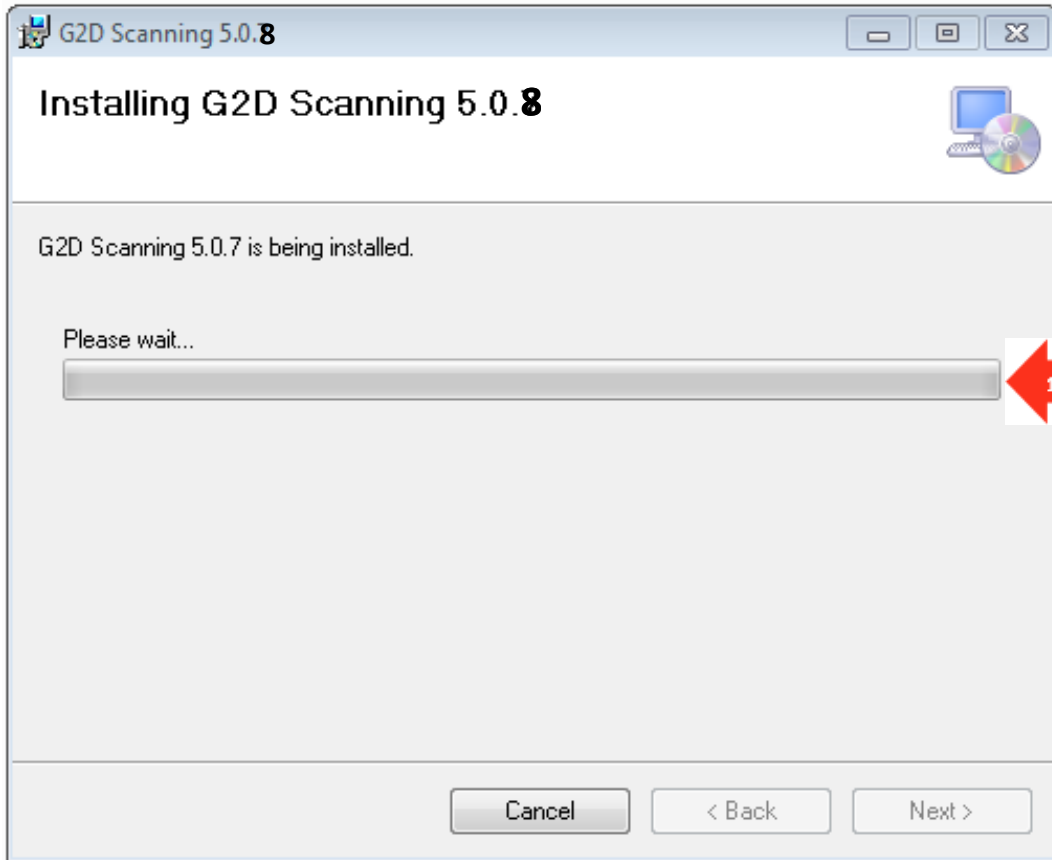
**Installing G2D Scanning Software 5.0.8**



11. Confirm Installation, click the **Next** button.



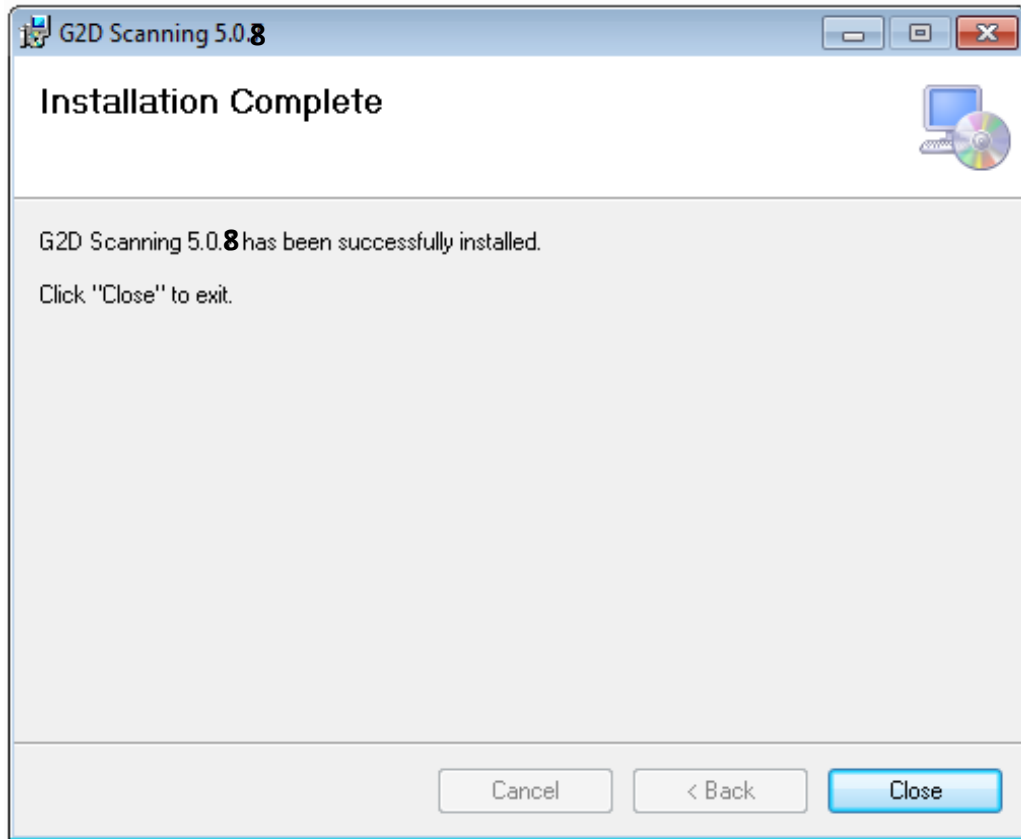
**Installing G2D Scanning Software 5.0.8**



12. Please wait while the software is being installed. This should only take a few minutes



### Installing G2D Scanning Software 5.0.8



13. Click the **Close** button.

#### Related Topic Reference Guides

- ✓ Scanning Plain Paper Forms
- ✓ Troubleshooting – Plain Paper Scanning
- ✓ Technology Platform Implementation Technical Considerations