

## Downloading and Installing Secure Tester for Windows

Secure Tester is a feature that prevents students from accessing other browser windows while they are taking a test. Students will not be able to take a test unless Secure Tester is successfully downloaded and installed on their test machine. Secure Tester needs to be installed with administrator permissions. After installing,

Technical Coordinators will need to validate that Secure Tester was installed in the location selected. The default location is "C:\Program Files (x86)\Schoolnet\Schoolnet Secure Tester\". For more information on installing with administrator permissions, see *Windows Instructions* below.

### Windows Instructions

To download the tester:

1. Go to <http://support.schoolnet.com/releases>.
2. Enter the username and password and then click **Log In**.

User Name: support

Password: iloveschoolnet



The screenshot shows a login form titled "Powered by schoolnet Login". The "User Name" field is filled with "support" and the "Password" field is filled with "iloveschoolnet". Below the password field is a checkbox for "Remember me next time." and a link "Forget your password? Click Here". The "Log In" button is highlighted with a red circle.

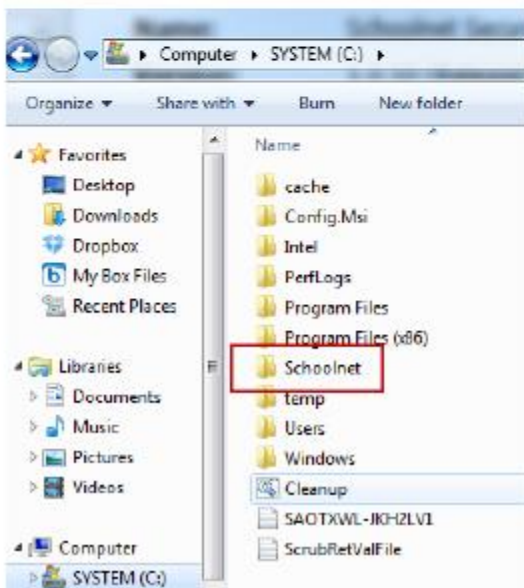
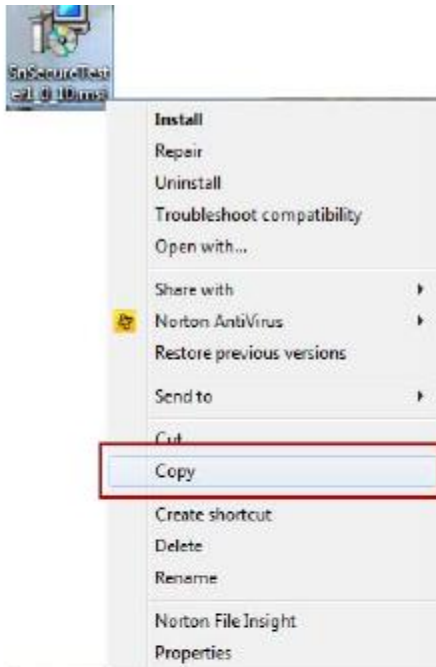
Select **Secure Tester** from the Product menu and then click **Search**.



The screenshot shows the "Schoolnet Downloads" page. It has a search filter section with the text "Use the filter choices below to search for your Schoolnet products and updates." The "Product" dropdown menu is open, showing "ScanIt" and "Secure Tester". The "Secure Tester" option is highlighted with a red circle. The "Search" button is also visible.

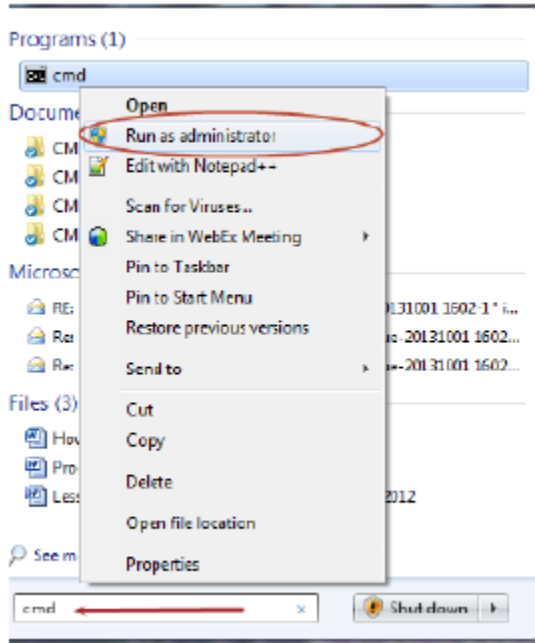
Download the latest PC version of the file. You can tell the latest version by looking at the Date field. Save the msi file to the Desktop (there may be two downloads available, please select the file that has .msi as the extension). In some browsers, once you click download, the file will be downloaded automatically to the Downloads folder on the computer.

Copy the snsecuretester.msi file to a folder.



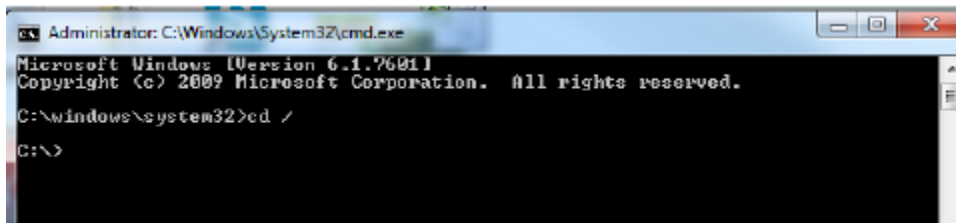
To ensure that Secure Tester installs properly, it needs to be installed from the command prompt as an admin. Open the start menu and type CMD in the search, then take the following steps:

Right-click **cmd** and select **Run as administrator**.

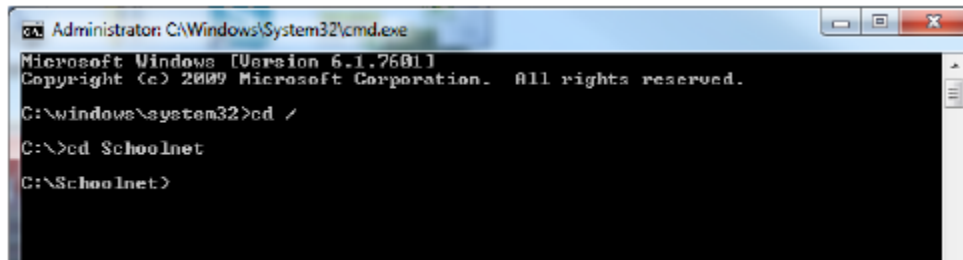


In the Command prompt, navigate to where SnSecureTesterPC.msi is located. In this example, it's saved at c:\>Schoolnet).

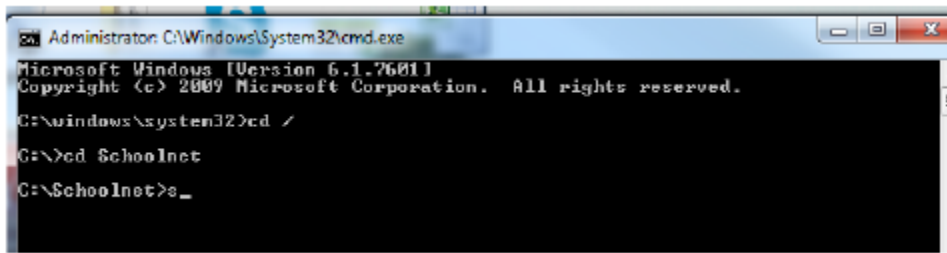
To change directories in the command prompt, type **cd /** then press the **Enter** key, and you will be at the **c:\>** prompt.



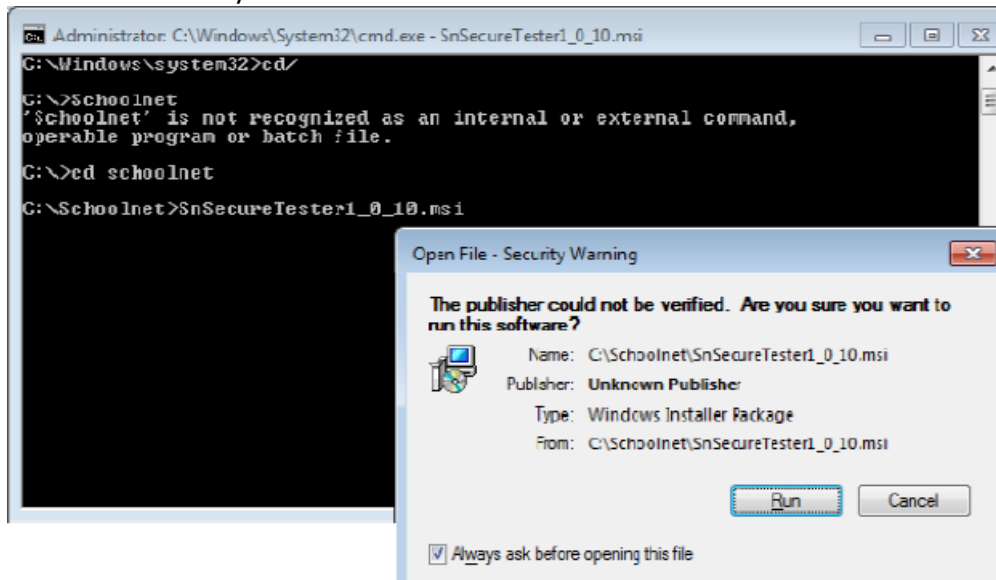
Type **cd Schoolnet** then press the **Enter** key, and you will be at the **c:\Schoolnet>** prompt.



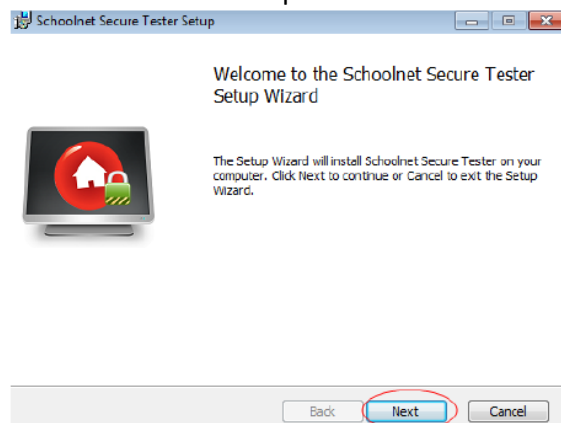
Type **s** and press the **Tab** key; this will bring up the Secure Tester file called SnSecureTester.msi.



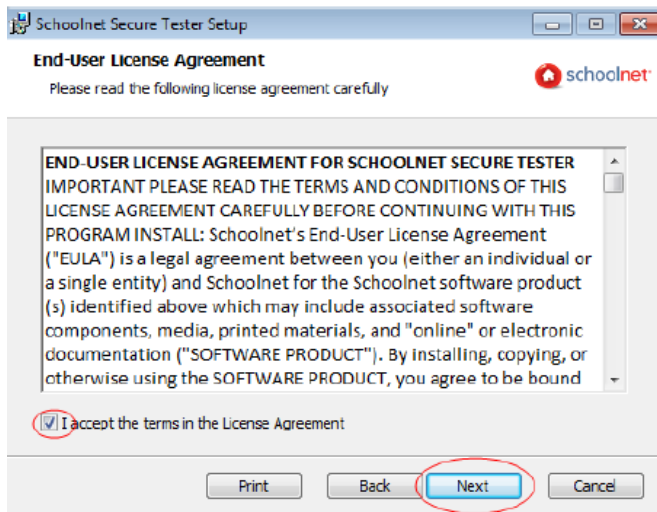
Press the **Enter** key and click **Run**.



Click **Next** on the Setup Wizard.

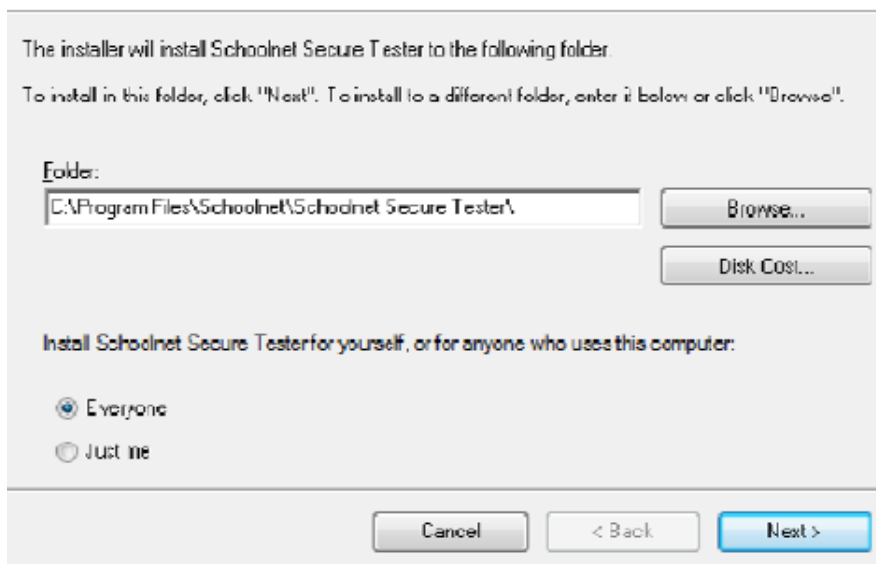


Check **I accept the terms in the License Agreement**, then click **Next**.

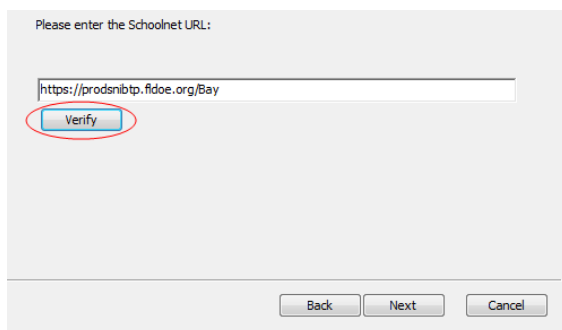


Use the default settings to select the installation folder and click **Next**.

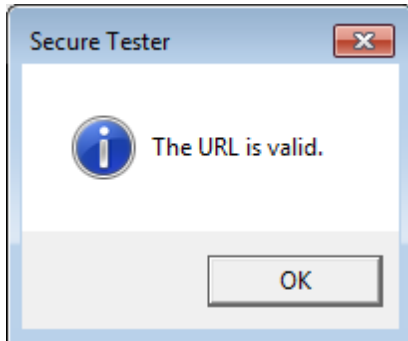
### Select Installation Folder



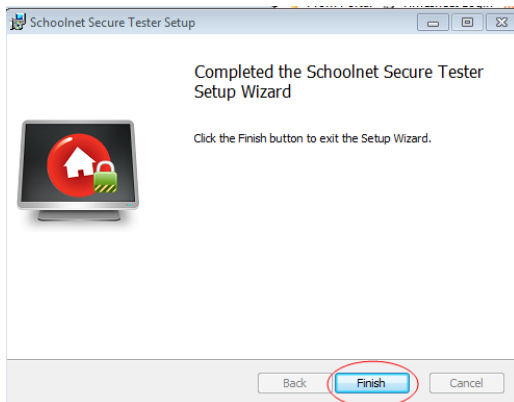
Type **<https://prodsnibtp.fldoe.org/Dade>** and click **Verify**



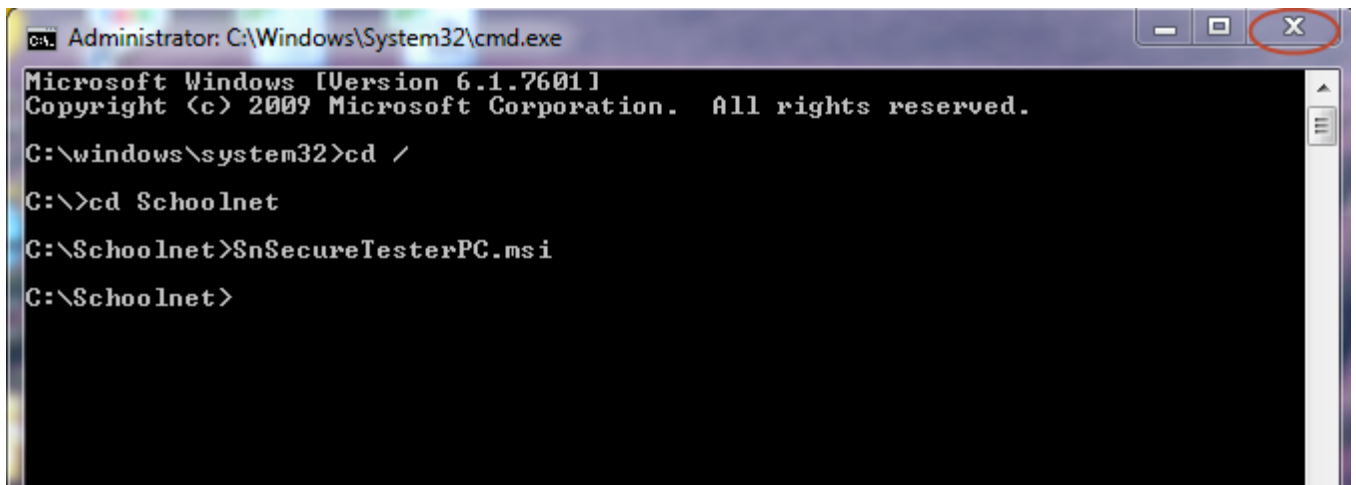
When the valid URL confirmation appears, select **OK**.



On the Confirm Installation window, click **Install**.  
Once the program is done installing, click **Finish** on the Installation Complete window.



Close the command prompt window by clicking the X.



The icon will appear on the desktop.



